

Project:

Thermal Insulating, Elastomeric Waterproofing Paint

Product:

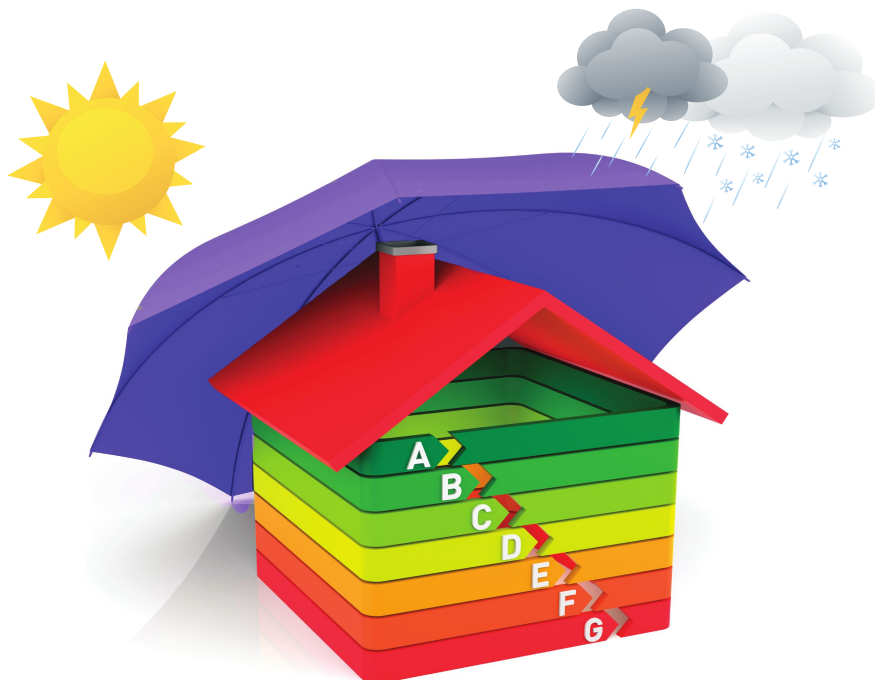
SurfaPaint ThermoDry Elastomeric Roof Paint

Benefits:

- Blocks Heat
- Conserves energy
- Reflects 94,8% of IR radiation
- Creates a watertight film
- Exceptional elasticity and substrate adhesion
- Excellent gap bridging
- Withstands ponding water
- Excellent opacity and coverage
- Excellent durability to UV
- Excellent alkali resistance
- Excellent color stability and chalk resistance
- Excellent resistance to mildew
- Extended lifetime
- Low VOC, water based paint
- Easy surface application
- **Colour: White**

Applications:

Exterior horizontal and inclining surfaces, such as: Terraces, concrete surfaces, plaster, roof tiles, bricks, wood, tar, bitumen.

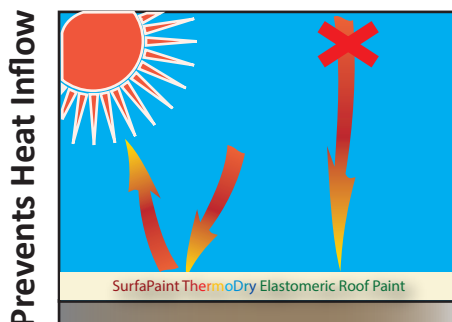


SurfaPaint ThermoDry Elastomeric Roof Paint

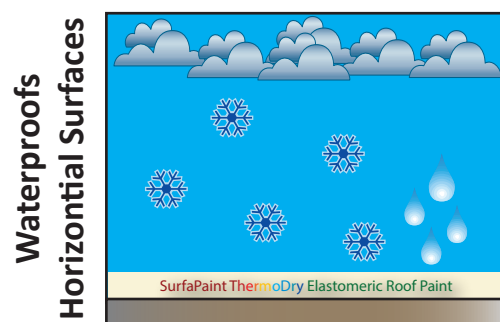
Thermal Insulating, Stain Resistant Elastomeric Waterproofing Paint for Horizontal or Inclining Exterior Surfaces

A huge amount of energy is transferred easily through roofs and extended amounts of energy are required for cooling in the summer or heating in the winter. SurfaPaint ThermoDry Elastomeric Roof Paint is a high quality elastomeric acrylic paint with thermal insulating properties, ideal for exterior use in horizontal and inclining surfaces. Powered by SurfaPore ThermoDry, it contains special thermal insulating materials contributing to energy savings during winter and summer. The thermal insulating particles block heat transfer, reflect thermal radiation, and create a moisture barrier that can result in significant energy savings. Excellent durability to UV radiation and alkali. SurfaPaint ThermoDry Elastomeric Roof Paint forms an impermeable and elastic film of excellent adhesion, which retains its elasticity even under very low temperatures. It is resistant to adverse weather conditions and has long lasting durability.

SurfaPaint ThermoDry Elastomeric Roof Paint offers complete waterproofing, conserves energy by reflecting thermal insulation, "blocking" thermal transfer and reducing water permeability of exterior surfaces.



Prevents Heat Inflow



Waterproofs Horizontal Surfaces

SurfaPaint® and ThermoDry® logos are registered trademarks of:
NanoPhos SA
Science & Technology Park of Lavrio,
Lavrio 19500, Greece
Tel.: (+30) 22920 69312 Fax: (+30) 22920 69303
W: www.NanoPhos.com E: info@NanoPhos.com

NanoPhos
Pioneering
Nanotechnology

ECRC EUROPEAN
COOLROOFS
COUNCIL

RATED PRODUCT

<http://coolroofcouncil.eu>

Product ID: FA00000008

**Ideal Waterproofing
even with ponding water**

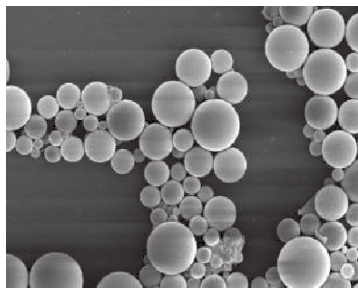
Packaging:

10L Plastic Pails

www.NanoPhos.com

SurfaPaint ThermoDry Elastomeric Roof Paint Description

SurfaPaint ThermoDry Elastomeric Roof Paint is a unique formulation that combines different performance pillars. The resin polymer is responsible for the elastomeric behaviour in a wide range of external temperatures providing elasticity values more than 350%. It is also the main element that provides an impermeable barrier, even under ponding water or snow pack. Furthermore, the paint binds cracks up to 1.5 mm. The resin polymer is the ideal matrix for SurfaPore ThermoDry which attribute its thermal properties. While the final coating reflects 94.7% of thermal radiation (InfraRed region of light), its thermal conductivity is 4 times less than that of a regular paint. Therefore, you enjoy increased energy efficiency, a reduced CO₂ footprint and tangible savings. Practically, SurfaPaint ThermoDry Elastomeric Roof coating remains white after application, repelling dirt and preserving the original aesthetic integrity of the surface applied. All in all, SurfaPaint ThermoDry Elastomeric Roof Paint combines the functionality of unique elements to offer a “smart” final coating that protects and saves energy simultaneously!



Thermal insulating particles of SurfaPore ThermoDry Elastomeric Roof Paint

International Standard Testing

Density (ISO 2811-1): 1.00±0.05 g/cm³

pH (ISO 19396-1): 8.8±0.5

Thermal Conductivity (EN ISO 12667:2004): 0,1 W/(mK).

Reflectance (ASTM E 903-96): total 91.58% (250-2200 nm), infrared 94.76% (700-2200 nm)

Emittance (ASTM E408-71): 0,91

Thermal performance of building components (ISO 13786:2007): The paint coating (2 applications) provides thermal insulation equal to EPS of about 2 cm.

Elasticity: -10°C: 400%, 23°C: 381%, 60°C: 315%.

Application: SurfaPaint ThermoDry Roof Paint can be applied directly on exterior horizontal (e.g. terraces) and inclining surfaces. New substrates from cement or masonry should have cured for more than 3-4 weeks before primer application. Adverse conditions during or immediately after application may affect the coating's properties. **Preparation:** Ensure all surfaces are clean and dry prior to application. Remove any dust, dirt and flaking parts. **Application note:** Stir well before application. Fill the bridging gaps and hairline cracks with a suitable putty. Surfaces are primed with SurfaPaint ThermoDry Roof Paint thinned with water up to 50%. Application temperature should be between 5 - 35 °C. Apply 2 coats using a good quality brush, roller or by airless spraying without thinning. Ensure corners and edges are adequately covered. Additional coats should be applied 24-36 hours after the previous application. **Spreading Rate:** 2 ± 1 m²/L. **Drying Time:** Typically 4 hour depending upon coat thickness. Low temperatures and high humidity will lengthen drying times. **Cleaning of tools:** All tools and equipment should be cleaned immediately after use with water. **Storage:** Store in a cool, dry, well ventilated area away from heat and direct sunlight. Carefully reseal partly used containers. Protect from frost. To avoid risk of spillage, always store and transport in a secure and upright position. The shelf life of the product in airtight containers is 18 months post production date. **Safety:** Keep out of reach of children. Avoid breathing dust / fume / gas / mist / vapours / spray. Use only outdoors or in a well-ventilated area. If swallowed: Immediately call a poison center or doctor/physician. Do not use empty container for storing food. Avoid contact with skin and eyes. After contact with skin wash immediately with soap and water. Do not use solvent thinners. In case of contact with eyes, rinse immediately with plenty of water and if necessary seek medical advice. **VOC (Volatile Organic Compounds):** Maximum EU VOC content limit value (Directive 2004/42/CE) of the product in a ready to use condition (category A/c “Exterior walls of mineral substrate”, Type WB): 40 g/L (2010). **Maximum VOC content of this product is 12 g/L.**



What is Nanotechnology?

Nanotechnology refers to the scientific field, which deals with very small structures, usually sized below 100 nm. One nanometer (nm) is one billionth of a meter (10⁻⁹ m) - it is so small that if earth were one meter in diameter, then one nanometer would have been the size of an apple! Nanosized materials reveal unique properties when compared to ordinary, bulk materials or even molecules.

NanoPhos at a glance...

At NanoPhos, we take advantage of the unique properties of nanotechnology and invent clever materials that solve every day problems. By harnessing nanotechnology, we seek to create a more comfortable, safe and trouble-free living environment. We transfer innovations out of our lab into the hands of consumers. Our vision is clear: “Tune the nanoworld to serve the macroworld” – in simple terms we make nanoparticles solve common problems. NanoPhos was recognized in January of 2008 by Bill Gates as one of the most innovative companies NanoPhos has been selected as a National Champion representing Greece in the 2016/17 European Business Awards for Innovation. NanoPhos is actively expanding its distribution network. Currently, the company is present in the UK, Scandinavia, Portugal, Spain, France, Germany, Italy, Greece, Cyprus, Romania, Egypt, Sudan, Saudi Arabia, Bahrain, UAE, Qatar, Oman, Iran, India, New Zealand, China, Japan, Mexico, Guatemala, Malaysia, Indonesia and Singapore.



NanoPhos SA has been approved by Lloyd's Register Quality Assurance to follow the EN ISO 9001:2000 Quality, the EN ISO 14001:2004 Environmental and the OHSAS 18001:2007 Occupational Health and Safety Management Systems for the development, production and sales of nanotechnology marine coatings and chemical products for cleaning and protection of surfaces and nanotechnology products.

LIMITED WARRANTY INFORMATION – PLEASE READ CAREFULLY. The information contained herein is offered in good faith and is believed to be accurate. However, because conditions and methods of use of our products are beyond our control, this information should not be used in substitution for customer's tests to ensure that NanoPhos' products are safe, effective, and fully satisfactory for the intended end use. Suggestions of use shall not be taken as inducements to infringe any patent. NanoPhos specifically disclaims any other expressed or implied warranty of fitness for a particular purpose or merchantability. NanoPhos disclaims liability for any incidental or consequential damages. This product is neither tested nor represented as suitable for medical or pharmaceutical uses.

ver 0916